

# Submittal Package



**W. R. MEADOWS®**



*A Family Company Since 1926*

QUALITY...SERVICE...INTEGRITY

800-342-5976

[www.wrmeadows.com](http://www.wrmeadows.com)

# Table of Contents:

AIR-SHIELD LSR

Safety Data Sheet

AIR-SHIELD LSR

Product Data Sheet

AIR-SHIELD LSR

Exterior Sheathing Panels Installation Guidelines




# SAFETY DATA SHEET

## SECTION 1: PRODUCT AND COMPANY IDENTIFICATION

<b>Product:</b>	<b>AIR-SHIELD™ LSR</b>	<b>Part Number: 6530000</b>
<b>Manufacturer:</b>	<b>W. R. MEADOWS, INC.</b>	<b>Address:</b> 300 Industrial Drive Hampshire, Illinois 60140
<b>Telephone:</b>	(847) 214-2100	In case of emergency, dial (800) 424-9300 (CHEMTREC)
<b>Revision Date:</b>	8/4/2020	
<b>Product Use:</b>	Permeable Air Barrier	

## SECTION 2: HAZARDS IDENTIFICATION/EXPOSURE LIMITS

HMIS	HAZARD STATEMENTS
<b>  Health  </b>	<b>WARNING!</b>
<b>  Flammability  </b>	May cause skin, eye, and respiratory irritation.
<b>  Reactivity  </b>	May cause damage to liver, kidneys, and blood. May damage fertility or the unborn child.
<b>  Personal Protection  </b>	<b>PRECAUTIONARY STATEMENTS</b> Avoid direct contact. Avoid inhalation of mists/aerosols.



## SECTION 3: HAZARDS COMPONENTS

<b>Chemical Name:</b>	<b>CAS Number</b>	<b>% by Weight</b>	<b>SARA 313</b>	<b>Vapor Pressure (mm Hg@20°C)</b>	<b>LEL (@25°C)</b>
1. Chloro Alkenes	68527-02-6	1-5	No	N/E	N/E
2. Butyl Benzyl Phthalate	85-68-7	1-5	No	0.16	N/E
3. Propylene Glycol	57-55-6	1-5	No	0.01	2.6
4. Isopropyl Alcohol	67-63-0	1-5	Yes	N/E	2
5. Diethylene Glycol Monobutyl Ether	112-34-5	1-5	No	0.02	0.7

*This product contains Kaolin Clay. Kaolin Clay contains small amounts of crystalline silica as a naturally occurring component. Exposure to silica is not expected to occur as the product is supplied as a solution. If product is dried/abraded, appropriate protective measures should be taken to prevent exposure to silica. Under the reporting requirements of Section 313 of Title III of the Superfund Amendments and Reauthorization Act of 1966 (SARA) and 40 CFR Part 372, chemicals listed on the 313 List (40 CFR Part 373.65) are identified under the heading "SARA 313." N/E: Not Established*

## SECTION 4: EMERGENCY AND FIRST AID PROCEDURES

**EYE CONTACT:** Flush eyes with water for fifteen (15) minutes. If irritation develops/persists, seek medical attention.

**SKIN CONTACT:** Wash affected areas with mild soap and water. If symptoms persist, seek medical attention.

**INHALATION:** Remove victim from exposure source and into fresh air. Treat symptomatically.

**INGESTION:** Seek immediate medical attention. If vomiting spontaneously occurs, keep victim's head below the hips to prevent lung aspiration.

**MOST IMPORTANT SYMPTOMS/EFFECTS, ACUTE AND CHRONIC:** See Section Eleven for Symptoms/Effects.

## SECTION 5: FIRE AND EXPLOSIVES HAZARDS

**FLASHPOINT:** >200 °F

**EXTINGUISHING MEDIA:** Water fog, foam, dry chemical.

**CHEMICAL/COMBUSTION HAZARDS:** Carbon monoxide, carbon dioxide, and incomplete combustion products.

**PRECAUTIONS/PERSONAL PROTECTIVE EQUIPMENT:** None recognized.

## SECTION 6: ACCIDENTAL RELEASE MEASURES

**SPILL OR LEAK PROCEDURES:** Evacuate hazard area of unauthorized personnel. Dike and contain spilled material. Remove source of spill if safe to do so. Soak up spilled material utilizing sand or other suitable absorbent. Place in sealed, marked containers for disposal.

## SECTION 7: HANDLING AND STORAGE

**SAFE HANDLING PROCEDURES:** Avoid direct contact.

**SAFE STORAGE:** Keep containers closed when not in use. Protect product from freezing



## SAFETY DATA SHEET

Date of Preparation: 8/4/20

Page 3 of 3

6530000

### SECTION 16: OTHER INFORMATION

PREPARATION DATE: 8/4/2020

PREPARED BY: Dave Carey

---

---

*The information contained herein is based on the data available to us and is believed to be correct. However, we make no warranty, expressed or implied regarding the accuracy of this data or the results to be obtained from the use thereof. We assume no responsibility for injury from the use of this product described herein.*

---

---

# PRODUCT DATA

W. R. MEADOWS®

SEALTIGHT®

Master Format: 07 27 26

NO. 724-C

JANUARY 2021  
(Supersedes October 2016)

## AIR-SHIELD™ LSR

Liquid Membrane Air/Vapor and Liquid Moisture Barrier

### DESCRIPTION

AIR-SHIELD LSR (liquid synthetic rubber) is an asphalt-free, single-component, synthetic rubber based liquid air/vapor and liquid moisture barrier. AIR-SHIELD LSR cures to form a tough, seamless, elastomeric membrane, which exhibits excellent resistance to air and moisture transmission.

### USES

AIR-SHIELD LSR has been specifically formulated to act as an air/vapor and liquid moisture barrier within the building envelope. It may be applied to most common surfaces and integrated into various wall systems. AIR-SHIELD LSR is suitable for both new construction and restoration. Primary applications include cavity wall and masonry wall construction. AIR-SHIELD LSR works equally well as an air barrier on precast concrete, cast-in-place concrete, masonry (concrete block), interior and exterior gypsum board, Styrofoam, primed steel, aluminum mill finish, anodized aluminum, primed galvanized metal, drywall, and plywood.

### FEATURES/BENEFITS

- Non-asphaltic – designed to meet stringent fire code requirements.
- Low permeability - prevents the transmission of air and inhibits moisture and vapor from passing through porous building materials.
- Highly flexible - bridges cracks, which may form in the substrate.
- User friendly – single-component, water-based technology allows for simple, safe application and easy cleanup.
- Liquid applied - simplifies detailing and assures a monolithic, seamless membrane when applied to a rough or smooth surface.
- Sprayable - with appropriately configured airless spray equipment - low application costs.

- Excellent adhesion - remains firmly bonded to the substrate, even when applied over damp surfaces.
- Low VOC content. Produces no harmful odors.
- Compatible with asphalt-based emulsion products.
- UV resistant – membrane can be left exposed up to four months.

### PACKAGING

5 Gallon (18.93 L) Pails  
55 Gallon (208.20 L) Drums

### COVERAGE

**Application Rate** 17 - 22 ft.<sup>2</sup>/gal.  
(1.59-2.05 m<sup>2</sup>/3.8 L)

**Wet Film Thickness** 75 mils

**Cured Film Thickness** 40 mils (1 mm)

Coverage dependent on substrate type, weather, and application conditions.

### SHELF LIFE

When stored indoors in original, unopened containers at temperatures between 40° - 90° F (4° - 32° C), optimum performance and best use is obtained within one year of date of manufacture.

### SPECIFICATIONS

- ASTM E 84, Class A
- Exceeds ABAA maximum material air permeance requirements when tested in accordance with ASTM E2178.
- Complies with U.S. EPA, CARB, LADCO, Colorado, Arizona Maricopa County, Utah Department of Environmental Quality, and OTC Phase I and II requirements.

*CONTINUED ON REVERSE SIDE ...*

### W. R. MEADOWS, INC.

P.O. Box 338 • HAMPSHIRE, IL 60140-0338  
Phone: 847/214-2100 • Fax: 847/683-4544  
1-800-342-5976  
[www.wrmeadows.com](http://www.wrmeadows.com)

HAMPSHIRE, IL / CARTERSVILLE, GA / YORK, PA  
FORT WORTH, TX / BENICIA, CA / POMONA, CA  
GOODYEAR, AZ / MILTON, ON / SHERWOOD PARK, AB

**TECHNICAL DATA**

Solids Content, %:	56
VOC Content, g/L	115
Color:	Sprays Pink Dries to Desert Tan
Flexibility @ -26° C (-15° F), (ASTM C836):	PASS
Tensile Strength (ASTM D412), PSI	250
Elongation (ASTM D412), %:	700
Water Vapor Permeance (ASTM E96, Procedure A) Perms:	0.1
Service Temperature:	Not to exceed 175° F (80° C)
Nail Sealability (ASTM D1970):	Pass
Storage Temperature of AIR-SHIELD LSR	40° - 90° F (4° - 32° C)
Air/Substrate Temperature (At Time of Application):	>20° F (-6.7° C) and rising

**Air Leakage**

Test Method	ASTM E2178-01	ASTM E2357
Pressure:	75 Pa (1.57 lb/ft. <sup>2</sup> )	75 Pa (1.57 lb/ft. <sup>2</sup> )
ABAA Requirements, maximum:	0.004 cfm/ft. <sup>2</sup> (0.02 L/S/M <sup>2</sup> )	0.04 cfm/ft. <sup>2</sup> (0.2 L/S/M <sup>2</sup> )
AIR-SHIELD LSR Results:	<0.004 cfm/ft. <sup>2</sup> (<0.02 L/S/M <sup>2</sup> )	<0.04 cfm/ft. <sup>2</sup> (<0.2 L/S/M <sup>2</sup> )

\*Independent test available upon request

AIR-SHIELD LSR may be used in NFPA 285 complying wall assemblies. Contact W. R. MEADOWS for further information.

**APPLICATION**

**Surface Preparation ...** All surfaces must be clean (free of all coatings and curing compounds), structurally sound, frost-free, and relatively smooth. Prepare substrate per manufacturer's instruction prior to application of membrane.

**Exterior Sheathing Panels ...** Exterior sheathing panels are to be installed and fastened per manufacturer's recommendation. For detailed application information, see INSTALLATION INSTRUCTIONS: JOINT TREATMENT OF EXTERIOR SHEATHING PANELS available at [www.wrmeadows.com](http://www.wrmeadows.com).

**Rough Openings ...** Refer to AIR-SHIELD ROUGH OPENINGS INSTALLATION GUIDELINES document available at [www.wrmeadows.com](http://www.wrmeadows.com) for recommendations.

**Concrete Masonry Units ...** Before applying AIR-SHIELD LSR to CMU surfaces, patch all cracks, protrusions, small voids, offsets, details, irregularities, and small deformities with MEADOW-PATCH® 5 or MEADOW-PATCH 20 from W. R. MEADOWS at least two hours before application.

**Temperature/Conditions ...** Drying (curing) times are dependent on-air temperature, airflow, relative humidity, substrate temperature, wind chill, dew point and etc. For example, as the temperature decreases or the humidity increases, the dry time will increase. If the temperature drops below 40° F (4.5° C), dry time (cure rate) and resistance to precipitation and dew will be delayed. Protect membrane from precipitation and washout prior to drying. Exposure to air temperatures/wind chills below 20° F (-6.6° C) during drying may lead to cracking and decrease of performance of AIR-SHIELD LSR.

Typical Dry Times:

Tack-Free Time: 4 hours at 75° F (23.5° C) & 50% RH

Dry Time: 48 hours at 75° F (23.5° C)

**Application Method ...** AIR-SHIELD LSR may be applied by spraying or a 3/4" (19.1 mm) minimum nap roller. (For recommendations on spray equipment, consult W. R. MEADOWS technical staff.)

AIR-SHIELD LSR may be sprayed on at the minimum coverage rate of approximately 17 - 22 ft.<sup>2</sup>/gal. (0.42 - 0.54 m<sup>2</sup>/L) (75 mils wet) (40 mils dry). Note: For roller applications or during periods of extremely hot weather, two coats may be necessary if the material begins to slump. Apply second coat after first coat has completely dried, approximately one to two hours after first coat. Frequently inspect surface area with a wet mil gauge to ensure consistent thickness. Work material well into any fluted rib forming indentations. Porous masonry block walls may require additional coats to obtain desired thickness.

**Cleanup ...** Uncured AIR-SHIELD LSR cleans up easily while wet with water. Cured material is best removed by xylene or by mechanical means.

### **PRECAUTIONS**

DO NOT FREEZE. Keep containers tightly sealed. Maximum UV exposure period is four months. It is recommended that the roof is installed prior to the application of the AIR-SHIELD LSR. This will help avoid water from getting behind the backup wall or filling the CMU block, which can potentially lead to jobsite concerns. Do not apply AIR-SHIELD LSR if precipitation is forecast or imminent within 24 hours at 75° F (23.5° C) and 50% RH of application. Adhesion of membrane on oriented strand board (OSB) can sometimes be affected by the level of surface texture or the presence of wax that is part of the binder used to bond together the wood strands. Prior to placement on OSB, in-situ adhesion tests should be performed to determine suitability of substrate prior to full installation. If there are variations in the OSB surface, multiple tests may be required.

### **TECHNICAL ASSISTANCE**

Please contact W. R. MEADOWS for specific details and/or data not outlined in this literature. Technical assistance, from design to product application, is available upon request.

### **LEED INFORMATION**

May help contribute to LEED credits:

- EAp2: Minimum Energy Performance
- EAc2: Optimize Energy Performance
- MRc9: Construction and Demolition Waste Management

**For most recent data sheet, further LEED information, and SDS, visit [www.wrmeadows.com](http://www.wrmeadows.com).**



### **LIMITED WARRANTY**

W. R. MEADOWS, INC. warrants at the time and place we make shipment, our material will be of good quality and will conform with our published specifications in force on the date of acceptance of the order. Read complete warranty. Copy furnished upon request.

### **Disclaimer**

The information contained herein is included for illustrative purposes only, and to the best of our knowledge, is accurate and reliable. W. R. MEADOWS, INC. cannot however under any circumstances make any guarantee of results or assume any obligation or liability in connection with the use of this information. As W. R. MEADOWS, INC. has no control over the use to which others may put its product, it is recommended that the products be tested to determine if suitable for specific application and/or our information is valid in a particular circumstance. Responsibility remains with the architect or engineer, contractor and owner for the design, application and proper installation of each product. Specifier and user shall determine the suitability of products for specific application and assume all responsibilities in connection therewith.

**W. R. MEADOWS®**

**SEALTIGHT®**

*A Family Company Since 1926*  
QUALITY...SERVICE...INTEGRITY

# INSTALLATION INSTRUCTIONS FOR JOINT TREATMENT OF EXTERIOR SHEATHING PANELS WHEN USING **AIR-SHIELD™ LSR FLUID-APPLIED MEMBRANE**

This document has been created as an addendum to our AIR-SHIELD technical data sheets to provide information regarding the recommended treatment of joints in exterior sheathing panels (drywall and glass-faced) when using AIR-SHIELD LSR fluid-applied membrane.

Following are the typical installation instructions recommended by W. R. MEADOWS. However, it is important to review each application as there may be situations that may require this procedure to be modified based on the project requirements. If this situation arises, please contact W. R. MEADOWS Technical Service.

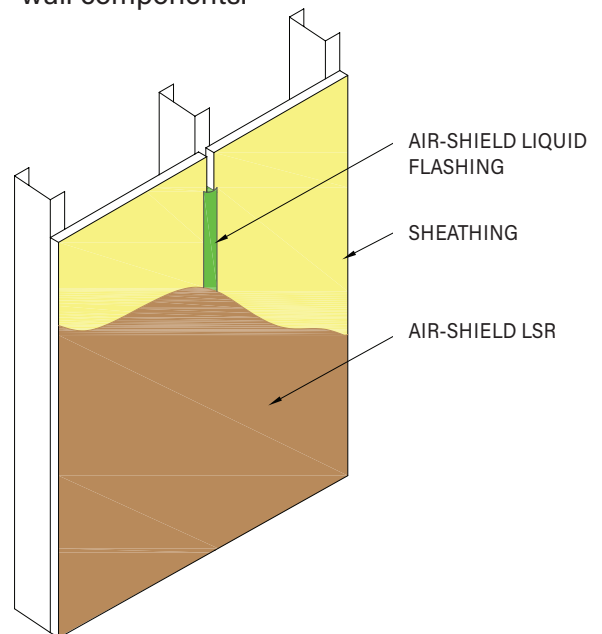
## JOINT TREATMENT USING AIR-SHIELD LIQUID FLASHING

1. Fill joint with AIR-SHIELD LIQUID FLASHING and create a 1" (25.4 mm) band over the joint area.
2. Do not strike flush with the sheathing surface.

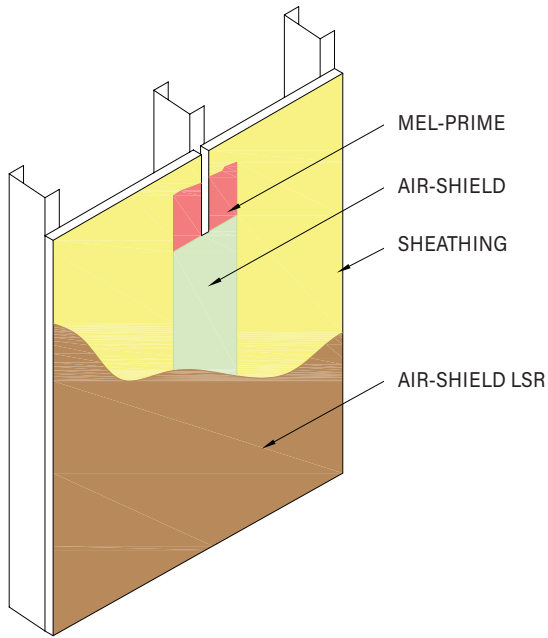


## INSTALLATION INSTRUCTIONS EXTERIOR SHEATHING PANELS

1. Install and fasten exterior sheathing panels according to the sheathing manufacturer's instructions.
2. When installing the fasteners, ensure that they are driven flush with the surface (not countersunk) and into the framing. Any fasteners that are countersunk, or any holes from the removal of a fastener, must be pre-treated with AIR-SHIELD LIQUID FLASHING prior to application of AIR-SHIELD LSR.
3. Inspect the joint to ensure that all areas to receive joint treatment are clean, dry, smooth, and free from all bond-breaking contaminants.
4. Remove and replace any damaged structural wall components.

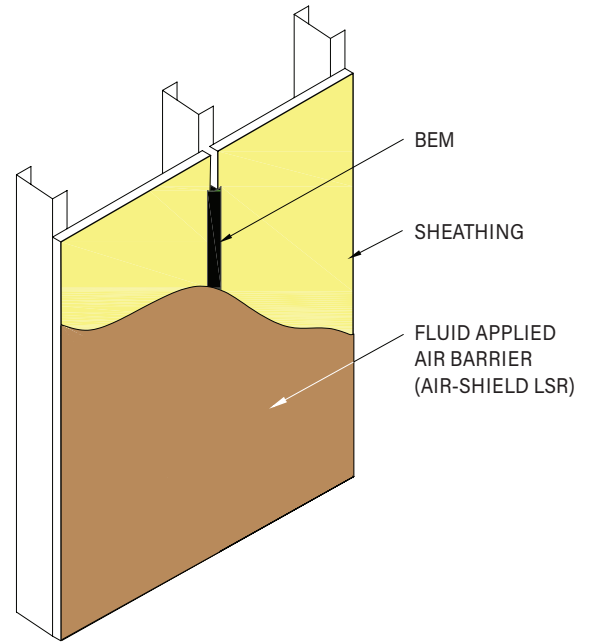


**W. R. MEADOWS, INC.** | P.O. Box 338 | HAMPSHIRE, IL 60140-0338  
Phone: 847/214-2100 | Fax: 847/683-4544 | [www.wrmeadows.com](http://www.wrmeadows.com)



### JOINT TREATMENT USING USING AIR-SHIELD SELF-ADHESIVE MEMBRANE

1. Apply MEL-PRIME from W. R. MEADOWS on either side of the joint, extending 3" (76.2 mm) from the center.
2. Install a 4" (25.4 mm) strip of AIR-SHIELD centered over the joint and roll press firmly into place. For joint widths greater than ¼" (6.4 mm), fill with BEM from W. R. MEADOWS prior to application of AIR-SHIELD.



### JOINT TREATMENT USING BEM

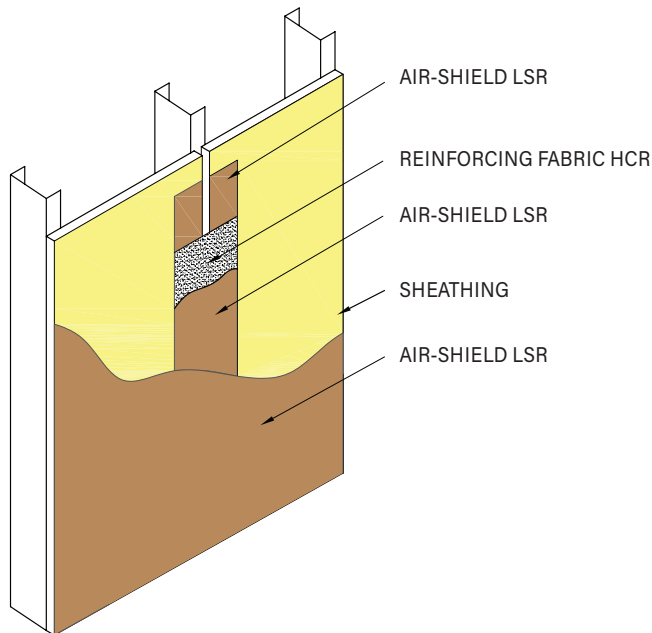
1. Fill joint with BEM and create a 1" (25.4 mm) band over the joint area.
2. Do not strike flush with the sheathing surface.



**W. R. MEADOWS, INC.** | P.O. Box 338 | HAMPSHIRE, IL 60140-0338  
**Phone: 847/214-2100 | Fax: 847/683-4544 | [www.wrmeadows.com](http://www.wrmeadows.com)**

## JOINT TREATMENT USING AIR-SHIELD LSR FLUID-APPLIED MEMBRANE

1. Fill joint area with AIR-SHIELD LSR using a W. R. MEADOWS SPREADER TOOL or a 3" (76.2 mm) putty knife. A standard 3" (76.2 mm) roller can be used to apply AIR-SHIELD LSR.
2. Extend AIR-SHIELD LSR beyond the joint line 3" (76.2 mm) onto face of exterior sheathing.
3. Fully embed REINFORCING FABRIC HCR from W. R. MEADOWS 3" (76.2 mm) wide into wet AIR-SHIELD LSR centered over the joint.
4. Run the SPREADER TOOL or putty knife over the embedded REINFORCING FABRIC HCR to remove any air bubbles.



**W. R. MEADOWS, INC.** | P.O. Box 338 | HAMPSHIRE, IL 60140-0338  
Phone: 847/214-2100 | Fax: 847/683-4544 | [www.wrmeadows.com](http://www.wrmeadows.com)